



ÖBB compact 2018/19

# Moving Austria.

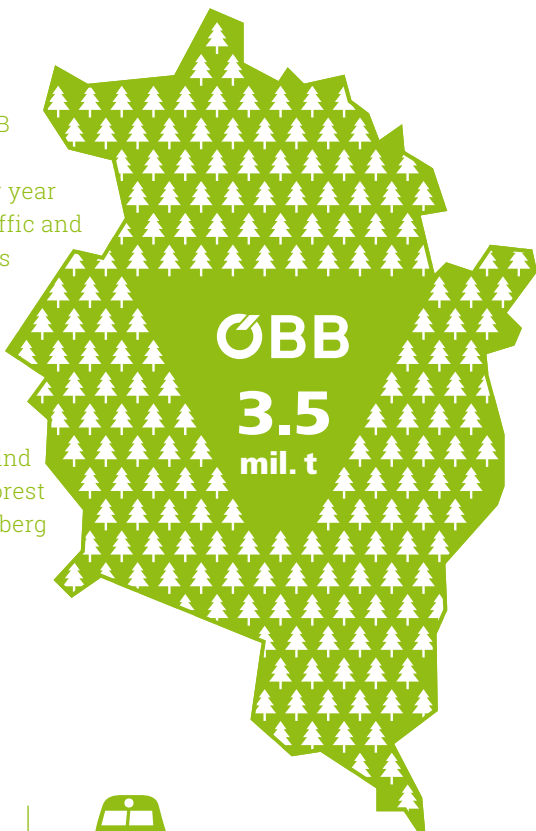
## Facts & Figures

ÖBB. Austrian  
Federal Railways

## Climate

### protection. ÖBB

saves 1.1 million tonnes of CO<sub>2</sub> per year by rail freight traffic and 2.4 million tonnes CO<sub>2</sub> by rail passenger transport. This amounts to a total of 3.5 million tonnes of CO<sub>2</sub>. In order to bind this quantity, a forest the size of Vorarlberg would have to be planted.



1.1



2.4



mil. t

of CO<sub>2</sub> emissions  
saved through  
ÖBB's rail transport

# FACTS & FIGURES

## FOREWORD

**Green ÖBB.** It's no news to us that we make an important contribution to climate protection in Austria every day. There is no longer any doubt that human activity is causing climate change, so our mobility services are now more modern and more important than ever.

We powered our first trains electrically over a hundred years ago. Today, more than 90 percent of all our passenger trains run on electricity. And in 2018 we continued to improve our climate protection performance. Since mid-2018, our trains have been powered exclusively by electricity from renewable sources. And since mid-2019, electricity exclusively from renewable energy is also used in all our operating facilities and offices.

This has massively improved our carbon footprint once again. We are making a significant contribution to enabling Austria to achieve its climate targets. And ÖBB is constantly working to improve the services on offer in order to move even more people on rails: to work, to school, and in their leisure time. Find out more about how we do this in what is now the 7th edition of this folder.

# At the customer's service

**RIGHT ACROSS AUSTRIA AND EUROPE.** With trains and buses ÖBB offers comprehensive, efficient and sustainable mobility services.

## Travelling the country

**Passengers (per year) ..... 474.2 mil.**

**Train passengers..... 261.4 mil.**

– of which local transport ..... 224.5 mil.

– of which long-distance transport ..... 36.9 mil.

    national ..... 25.5 mil.

    international ..... 11.4 mil.

**Bus passengers..... 212.8 mil.**

**Train passenger kilometres (per year) ..... 11.5 bn.**

– of which local transport ..... 5.5 bn.

– of which long-distance transport ..... 6.0 bn.

**Freight transported (tonnes per year) ..... 115.2 mil.**

– of which freight traffic\* ..... 113.0 mil.

– of which contract logistics ..... 2.2 mil.

    Shipments (number) ..... 2.8 mil.

    Packages (number) ..... 5.9 mil.

**Tonne kilometres (per year) ..... 31.7 bn.**

\* Freight traffic consists of wagonload traffic, container transports and transports of HGVs on the rolling highway (see also page 22).



**2067 | 1959–1977**  
26 still in operation, 111 built

|   |              |
|---|--------------|
| <b>Trains</b> (per day) .....             | <b>6,596</b> |
| – of which local transport* .....         | 4,279        |
| ÖBB trains (weekdays) .....               | 4,144        |
| – of which long-distance transport* ..... | 340          |
| ÖBB trains .....                          | 270          |
| – of which freight traffic* .....         | 1,147        |
| – of which service trains .....           | 830          |

\* incl. further railway undertakings (RU)

## Suburban railway

|  |           |
|--|-----------|
| <b>Lines Austria-wide</b> (managed by ÖBB) .....               | <b>34</b> |
| Passengers (per day) .....                                     | 441,489   |
| <b>Lines Vienna/Lower Austria/Burgenland</b> (since 1962) .... | <b>10</b> |
| Passengers (per day) .....                                     | 246,960   |
| <b>Lines Upper Austria</b> (since 2016) .....                  | <b>4</b>  |
| Passengers (per day) .....                                     | 39,800    |
| <b>Lines Styria</b> (since 2007) .....                         | <b>6</b>  |
| Passengers (per day) .....                                     | 38,544    |
| <b>Lines Carinthia</b> (since 2010) .....                      | <b>4</b>  |
| Passengers (per day) .....                                     | 23,185    |
| <b>Lines Salzburg</b> (since 2003) .....                       | <b>2</b>  |
| Passengers (per day) .....                                     | 23,000    |
| <b>Lines Tyrol</b> (since 2007) .....                          | <b>6</b>  |
| Passengers (per day) .....                                     | 37,000    |
| <b>Lines Vorarlberg</b> (since 2011) .....                     | <b>2</b>  |
| Passengers (per day) .....                                     | 33,000    |

## Postbus

**Kilometres travelled** (per year) ..... **142 mil.**

**Kilometres travelled** (per day) ..... **389,041**

**Lines** ..... **751**

**Bus stops** ..... **20,648**

– of which with train connection ..... 649

### Passengers in Austria and the Czech Republic

(per year) ..... **212.9 mil.**

- of which scheduled services ..... 88 %

- of which rental car and line-type services ..... 12 %

(ski buses, rail replacement services, works traffic, etc.)

**Communities covered** ..... **1,795**

**Municipalities supplied** (share)\* ..... **85%**

\* In more than one-third of the municipalities served, the Postbus is the only means of public transport.

**Buses** ..... **2,314**

**Passengers nationwide** (per year) ..... **207 mil.**

Eastern region (Vienna, Lower Austria, Burgenland) .... 64 mil.

Styria ..... 28 mil.

Carinthia ..... 16 mil.

Upper Austria ..... 30 mil.

Salzburg ..... 22 mil.

Tyrol ..... 23 mil.

Vorarlberg ..... 24 mil.



**Low floor bus 12 metres** | 2007–2019  
(MAN/Mercedes/Solaris)  
342 still in operation

## Train tickets

|  |                  |
|--|------------------|
| <b>Tickets sold</b> (per year) .....                   | <b>49.8 mil.</b> |
| – of which at ticket machine .....                     | 55.8%            |
| – of which at ticket counter* .....                    | 18%              |
| – of which on internet/smartphones/tablets .....       | 26.2%            |
| <b>SCOTTY active devices</b> (iOS & Android) .....     | <b>1.1 mil.</b>  |
| <b>SCOTTY timetable information</b> (per minute) ..... | <b>1,153</b>     |
| <b>SCOTTY timetable information</b> (per month) ....   | <b>49.8 mil.</b> |
| <b>Page views on oebb.at</b> (in April 2019) .....     | <b>3.9 mil.</b>  |

\* Ticket counters/external partners/customer service/lounge/business customer advisers/infrastructure partners/ÖBB travel agencies

## International

|   |            |
|---|------------|
| <b>International trains</b> (daily) ..... | <b>149</b> |
| – of which day trains .....               | 121        |
| – of which Nightjet .....                 | 28         |
| Longest international distances* (km)     |            |
| Vienna – Rome .....                       | 1,129      |
| Vienna – Hamburg .....                    | 1,126      |
| Vienna – Bucharest.....                   | 1,111      |

\* Long-distance routes served daily without scheduled coach connections

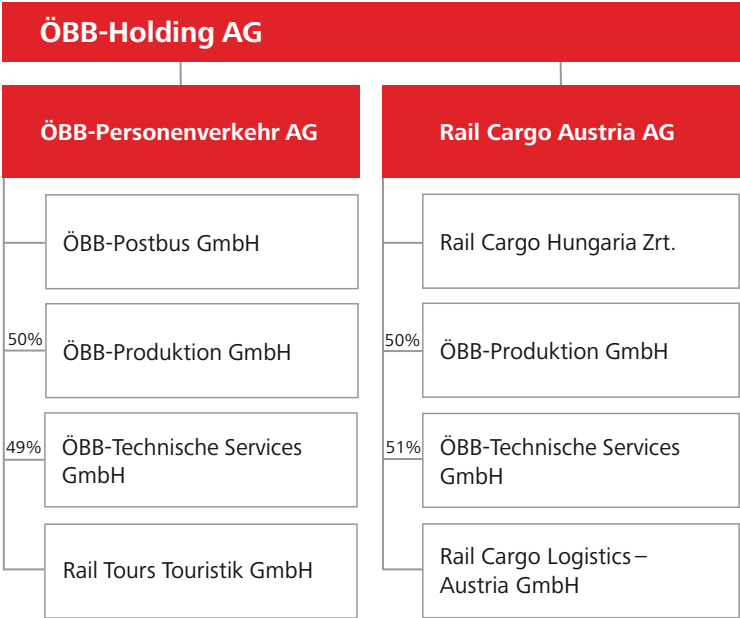
## Green numbers ÖBB Personenverkehr\*

|   |                 |
|---|-----------------|
| <b>Greenhouse gas emissions saved</b>                         |                 |
| by ÖBB passenger transport (t CO <sub>2</sub> per year) ..... | <b>2.4 mil.</b> |
| saved CO <sub>2</sub> emissions in ÖBB passenger transport    |                 |
| compared to passenger cars (g/pkm**) .....                    | 204.1           |

\* Figures 2017; \*\* pkm = passenger kilometres

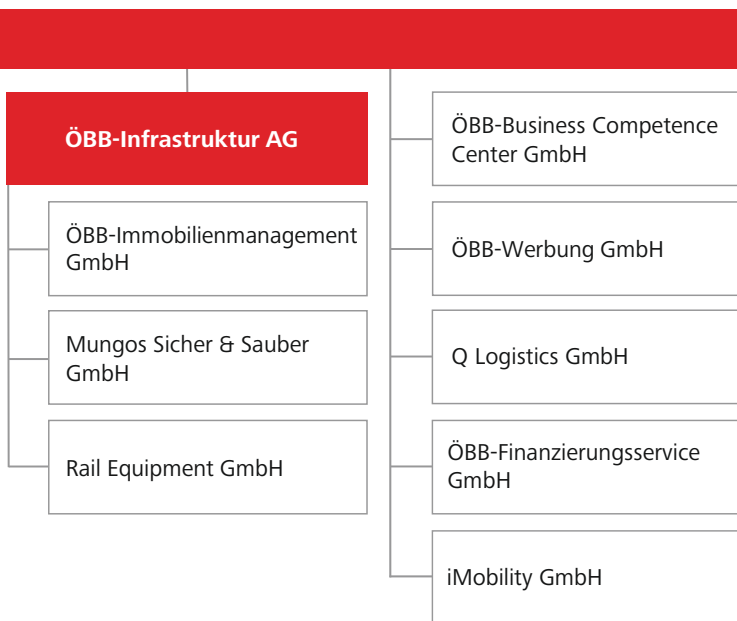
# Structure & Organisation

**ORGANISATIONAL CHART\*.** Under the umbrella of the holding company, ÖBB Group is divided into three operative subsidiaries. A clear structure for a complex task.



2043 | 1964–1977  
7 still in operation, 77 built





\* This organisational chart includes a selection of important companies within the ÖBB Group. As at: 31 December 2018.

# A success story

**THE BUSINESS FIGURES.** With an EBT of EUR 150 million, the results of the ÖBB Group 2018 are clearly positive for the seventh year in a row.

## Earnings ratios according to IFRS

|  |                |
|--|----------------|
| Revenue .....                                      | <b>5,644.0</b> |
| Total income .....                                 | <b>6,968.9</b> |
| Total expenses .....                               | <b>6,181.2</b> |
| Expenses for materials and services received ..... | 1,988.2        |
| Personnel expenses .....                           | 2,691.9        |
| EBIT .....   | <b>787.7</b>   |
| EBT .....  | <b>150.9</b>   |

## Balance sheet ratios according to IFRS

|                                     |                 |
|-------------------------------------|-----------------|
| Total assets .....                  | <b>29,709.9</b> |
| Non-current assets .....            | <b>28,386.0</b> |
| Current assets .....                | <b>1,323.9</b>  |
| Property, plant and equipment ..... | <b>26,808.7</b> |
| Equity capital .....                | <b>2,528.7</b>  |
| Equity ratio .....                  | <b>8.5%</b>     |
| Financial liabilities .....         | <b>24,146.3</b> |
| Gross capital expenditure .....     | <b>2,590.8</b>  |

(all figures in EUR million)



**2143** | 1965–1977  
12 still in operation, 77 built

## Revenue by company

|   |                |
|---|----------------|
| ÖBB Personenverkehr sub-group .....                   | <b>2,202.1</b> |
| Rail Cargo Austria sub-group .....                    | <b>2,304.3</b> |
| ÖBB Infrastruktur sub-group .....                     | <b>2,104.8</b> |
| ÖBB-Holding AG and other companies .....              | <b>1,471.6</b> |
| minus consolidation of operative subsidiaries .....   | -2,438.8       |
| Revenue acc. to Consolidated Financial Statements ... | 5,644.0        |
| Other income (consolidated) .....                     | 1,324.9        |
| <b>Total income .....</b>                             | <b>6,968.9</b> |

## Income position of ÖBB Personenverkehr

|                      |                |
|----------------------|----------------|
| <b>Revenue .....</b> | <b>2,202.1</b> |
| Total income .....   | 2,227.2        |
| Total expenses ..... | -2,101.0       |
| <b>EBT .....</b>     | <b>90.9</b>    |

## Income position of Rail Cargo Austria

|                      |                |
|----------------------|----------------|
| <b>Revenue .....</b> | <b>2,304.3</b> |
| Total income .....   | 2,347.4        |
| Total expenses ..... | -2,294.3       |
| <b>EBT .....</b>     | <b>23.5</b>    |

## Income position of ÖBB Infrastruktur

|                      |                |
|----------------------|----------------|
| <b>Revenue .....</b> | <b>2,104.8</b> |
| Total income .....   | 3,303.9        |
| Total expenses ..... | -2,700.8       |
| <b>EBT .....</b>     | <b>45.3</b>    |

(all figures in EUR million)

# Service provider for mobility

**THE WORLD OF TRAINS.** 474 million passengers travelled on board the trains and buses of ÖBB in 2018. An insight into the numbers of a complex system.

## Systems and operation

|   |              |
|---|--------------|
| <b>Kilometres of track</b> (incl. switch point length) .....  | <b>9,785</b> |
| <b>Operated length of track</b> (km)* .....                   | <b>4,864</b> |
| – of which single-track .....                                 | 2,709        |
| electrified .....   | 1,431        |
| – of which double-track .....                                 | 2,155        |
| electrified .....   | 2,129        |
| <b>New stretches of track in operation since 2008</b> (km) .. | <b>170</b>   |
| <b>Additional new stretches of track by 2028</b> (km) .....   | <b>300</b>   |
| <b>Traffic control centres</b> .....                          | <b>1</b>     |
| <b>Signalling and control centres</b> .....                   | <b>5</b>     |
| <b>Signal towers</b> .....                                    | <b>663</b>   |
| – of which electronic signal towers .....                     | 296          |
| <b>Train stations and stops</b> .....                         | <b>1,061</b> |
| <b>Freight centres/terminals</b> .....                        | <b>8</b>     |
| <b>Shunting sites</b> .....                                   | <b>103</b>   |
| <b>Bridges</b> .....  | <b>6,431</b> |
| <b>Tunnels</b> .....  | <b>250</b>   |



**1142** | 1969–1977

Conversion from 1042.5, 63 still in operation, 177 built

|  |               |
|--|---------------|
| <b>Railway crossings</b> .....                   | <b>3,205</b>  |
| <b>Train protection ETCS Level 2 (km)</b> .....  | <b>272</b>    |
| <b>Hot box detection systems</b> .....           | <b>271</b>    |
| <b>Rockface and embankment rests (ha)</b> .....  | <b>3,281</b>  |
| <b>Avalanche and rock fall guards (km)</b> ..... | <b>195</b>    |
| <b>Noise barriers (km)</b> .....                 | <b>950</b>    |
| <b>Signals</b> .....                             | <b>25,306</b> |
| – of which light signals .....                   | 22,292        |
| <b>Switch points</b> .....                       | <b>13,555</b> |
| – of which electrically heated .....             | 10,315        |

\* State data from page 45 onwards based on track lengths (total 4,713 km)

|   |            |
|---|------------|
| <b>Train stations/stops updated by 2018</b> .....   | <b>220</b> |
| <b>Train stations/stops updated by 2028</b> .....   | <b>300</b> |
| Platforms (km) .....  | 477        |
| Lifts .....   | 712        |
| Escalators .....  | 192        |
| Wheelchair lifts .....  | 212        |
| Loudspeaker circuits .....  | 2,122      |
| <b>Emergency call points in train stations</b> at which the calls<br>are transferred directly to an infrastructure control centre | <b>925</b> |
| – of which emergency call facilities in lifts .....   | 552        |
| – of which emergency call pillars .....   | 336        |
| – of which emergency call facilities by escalators .....  | 37         |
| Emergency call facilities in barrier-free toilets .....   | 153        |
| Clocks in the customer area .....   | 4,112      |

**Average infrastructure investments****2018–2023** (EUR per year) approx. .... **2 bn.**

Average new construction and expansion investments (excl. P&amp;R and noise protection) 2018–2023 (EUR per year) ..... 1.7 bn.

Average reinvestments (incl. P&R and noise control)  
+ repair 2018–2023 (EUR per year) ..... 1.2 bn.**Park & Ride spaces** ..... **115,359**

– of which car parking spaces ..... 66,948

– of which two-wheeler parking spaces ..... 48,411

**Passengers with an accessible train station****2018** ..... **84%****2020** ..... **85%****2027** ..... **90%****Number of railway undertakings (RU)****in the Austrian route network in 2018** ..... **43****Punctuality**

ÖBB long-distance passenger transport ..... 86.8%

ÖBB local passenger transport ..... 96.3%

**ÖBB passenger transport total** ..... **95.8%****Punctuality threshold**

Passenger transport (minutes) ..... 5

Freight traffic (minutes) ..... 15



**1044/1144** | 1978–1995  
209 still in operation, 217 built

## Capacity utilisation

|  |            |
|--|------------|
| <b>Trains travelling the ÖBB network at peak times .....</b> | <b>591</b> |
| on average travelling Mon-Fri 06:00–20:00 .....              | 504        |
| on average travelling Mon-Sun 00:00–24:00 .....              | 360        |
| <b>Starting trains throughout Austria at peak times</b>      |            |
| (per minute) .....   | <b>9</b>   |

## Fleet

|                             |               |
|-----------------------------|---------------|
| <b>Locomotives .....</b>    | <b>1,047</b>  |
| <b>Passenger cars .....</b> | <b>2,691</b>  |
| <b>Freight cars .....</b>   | <b>25,698</b> |

## Real estate\*

|  |                   |
|--|-------------------|
| <b>Buildings .....</b>                               | <b>4,218</b>      |
| <b>Building space</b>                                |                   |
| incl. outside rented spaces (m <sup>2</sup> ) .....  | <b>2.7 mil.</b>   |
| Property management .....                            | 23,159            |
| <b>Net land owned by ÖBB (m<sup>2</sup>)** .....</b> | <b>192.7 mil.</b> |
| - of which in Vienna (m <sup>2</sup> ) .....         | 11.7 mil.         |

# 3,205

**Railway crossings** currently existing along Austria's railways (status 31 Dec. 2018). This is 21 less than in the previous year. In the year 2000 there were still about 6,100 crossing points, almost twice as many as today. To increase safety, ÖBB invests EUR 25 million annually in the technical safety as well as the closure of railway crossings.



|  |        |
|--|--------|
| Maintenance and investment projects (per year) ..... | 1,350  |
| Lease and rental contracts (external) .....          | 17,978 |
| Technical assets (technology management) .....       | 76,300 |
| TQB-certified buildings .....                        | 2      |

\* All figures ÖBB-Infrastruktur AG

\*\* The value of net floor area owned by ÖBB refers to the areas managed by ÖBB-Immobilienmanagement GmbH.

## Security

|  |        |
|--|--------|
| Employees .....  | 502    |
| Emergency calls received .....   | 62,682 |
| Operations in the event of malfunctions/emergencies ....               | 4,537  |
| Actively removed from elevators .....                                  | 507    |
| Video cameras at railway stations, stops and other installations ..... | 7,200  |
| Video cameras in trains .....  | 3,964  |
| Video evaluations (per year) .....                                     | 2,922  |
| Bodycams (Mungos) .....  | 61     |
| Bodycams (passenger transport) .....                                   | 58     |
| Emergency vehicles .....   | 25     |
| Defibrillators .....   | 31     |

## Cleaning at train stations & stops

|  |          |
|--|----------|
| Employees .....                        | 490      |
| Area (m <sup>2</sup> ) .....           | 2.1 mil. |
| Glass surfaces (m <sup>2</sup> ) ..... | 225,473  |



**1063** | 1983–1991  
48 still in operation, 50 built



|                                |        |
|--------------------------------|--------|
| Lifts .....                    | 555    |
| Escalators .....               | 146    |
| Stairs (m <sup>2</sup> ) ..... | 50,121 |
| Handrails (metres) .....       | 70,482 |
| Benches (metres) .....         | 15,738 |
| Waste bins .....               | 5,961  |
| Ashtrays .....                 | 526    |

## Lost & Found

|   |               |
|---|---------------|
| <b>Items found (per year) .....</b>       | <b>29,997</b> |
| returned within 10 days .....             | 9,804         |
| in per cent .....                         | 32.7%         |
| Lost & Found offices across Austria ..... | 7             |
| Calls per week .....                      | 2,000         |

## The 10 most found objects

|                                     |       |
|-------------------------------------|-------|
| Wallets .....                       | 3,206 |
| Mobile phones and smartphones ..... | 3,180 |
| Backpacks .....                     | 2,714 |
| Keys .....                          | 1,749 |
| Coats .....                         | 1,558 |
| Trolleys .....                      | 1,083 |
| Sports bags and travel bags .....   | 1,008 |
| Hats .....                          | 912   |
| ATM cards .....                     | 764   |
| Gym bag .....                       | 746   |

## Customer service

**Calls per year ..... 1.4 mil.**

**Postings and comments on Facebook,**

**Twitter, Youtube, Instagram ..... 138,000**

– Reactions by Community Management ..... 83,000

– Average response time (in minutes) ..... 23

**Emails received ..... 558,000**

– Complaints ..... 105,000

– Inquiries about customer tickets ..... 120,000

– Passenger rights ..... 23,000

– Objections to additional fare demands ..... 17,000

– Refund requests ..... 8,000

– General email inquiries ..... 285,000

**Employees ..... 205**

**Apprentices ..... 57**

**Area (m<sup>2</sup>) ..... 2,800**

## Rail&Drive

**Vehicles provided ..... 275**

Rail&Drive locations ..... 26

– of which with e-charging infrastructure ..... 10



**1064** | 1984–1990  
10 still in operation

# Communicative ÖBB

**DIALOGUE.** Hardly any other company receives as much attention from the general public as ÖBB. The clear answer to this is transparent communication on all channels.

## Twitter, Facebook etc.\*

**Facebook reach** (people reached) ..... **47.6 mil.**

Subscribers ..... 178,082

Published articles ..... 1,909

Likes of Facebook posts ..... 277,272

**Twitter reach** (people reached) ..... **11.3 mil.**

Subscribers ..... 18,227

Published tweets ..... 1,379

Likes of tweets ..... 620,960

**Instagram reach** (people reached) ..... **1.6 mil.**

Subscribers ..... 29,866

Published articles ..... 210

Likes for posts ..... 472,298

\* Dates: July 2018 – July 2019

## The top 3 most-read posts (reach)

Hurrah the goat! (rescue mission) ..... 2.3 mil.

Christmas movie "Time travel" ..... 1.2 mil.

Horse on the train ..... 218,000

## Press

**Press releases** (per week) ..... **14**

**ÖBB reports in media** (per year) ..... **28,200** (77/day)

## Billboards

**Billboards** ..... **24,000**

– of which posters on trains and buses ..... 10,500

– of which on locomotives, wagons and buses ..... 3,780

– of which train station posters ..... 5,200

– of which train station and informational billboards ..... 3,200

– of which digital advertising screens ..... 100

– of which ÖBB City-Lights ..... 270

– of which bridge ads ..... 700

## Railnet

### Digital onboard portal for Railjet passengers

Visits to the website railnet.oebb.at (per day) ..... 22,000

Digital newspaper pages read (per month) ..... 330,000

Newspapers and magazines available as e-papers ..... 120

Browser languages/month up to ..... 74

Streamed hours of the classical offer fidelio (2018) ..... 1,800



**2068** | 1989–1994

58 still in operation, 60 built

## Intranet

**Logins per year ..... 10.5 mil.**

Searches ..... 750,000

Stay per visit (minutes) ..... 11

Number of comments on intranet posts ..... 1,831

Positive voices on posts ..... 145,924

### Top 5 most-read contributions

ÖBB Award 2018 ..... 27,778

Group figures ..... 25,389

Employee survey 2018 ..... 20,479

Track stories ..... 19,064

Executive UPDATE 2018 ..... 16,405

**Intranet pages ..... 36,000**

– Images ..... 139,311

– Videos ..... 2,788

– PDFs ..... 115,165

– Excel ..... 17,995

## 261.4 Mio.

**passengers** were transported by ÖBB with its trains in 2018. This is an increase of 15.8 million passengers and also **an absolute passenger record on rail**. In the past year, 224.5 million passengers travelled on the local transport trains of ÖBB and 36.9 million on the long-distance trains – of which in turn 25.5 million in Austria and 11.4 million internationally.



# Connected in Europe and Asia

**END-TO-END LOGISTICS.** Over 113 million tonnes of freight are transported reliably and in an environmentally friendly way every year in Europe and as far as Asia.

## Internationally connected

**Total tonnes transported** (per year) ..... **113.0 mil.**

– of which conventional wagonload traffic ..... 90.7 mil.

– unaccompanied combined traffic ..... 16.3 mil.

(corresponds to approx. 1.6 mil. Intermodal Transport Units)

– Rolling Highway ..... 5.9 mil.

(corresponds to 166,459 transported trucks)

– tonnes transported in and through Austria ..... 78.6 mil.

**Number of trains** (per year) ..... **511,673**

**Train kilometres** (per year) ..... **52.02 mil.**

**Tonne kilometres** (per year) ..... **31.7 bn.**

Modal share of rail in total

freight traffic performance in Austria (tkm\*) ..... 29.2%

**Three longest routes** through ÖBB's rail freight traffic

Budapest – Xi'an (km)..... 7,500

Lodz – Istanbul (km)..... 2,161

Sopron – Budapest – Istanbul (km)..... 1,754



**1163** | 1994–1995  
20 still in operation

## Exemplary transport volumes in ÖBB's rail freight transport

423 Trains between China, Russia and Europe

|  |           |
|--|-----------|
| (TEU**) .....                          | 34,822    |
| Transport volume for Hungary (t) ..... | 32.4 mil. |
| Transport volume for Germany (t) ..... | 14.6 mil. |
| Transport volume for Italy (t) .....   | 5.9 mil.  |

## Top 5 market shares of Rail Cargo Group

|                |              |
|----------------|--------------|
| Austria .....  | <b>66.8%</b> |
| Hungary .....  | <b>57.2%</b> |
| Slovenia ..... | <b>8.4%</b>  |
| Croatia .....  | <b>8.4%</b>  |
| Romania .....  | <b>4.7%</b>  |

## Green numbers ÖBB rail freight transport\*\*\*

Greenhouse gas emissions saved by ÖBB rail freight transport in Austria (t CO<sub>2</sub> per year) ..... **1.1 mil.**

CO<sub>2</sub> emissions from ÖBB rail freight transport (g/tkm\*) ..... 4.1

CO<sub>2</sub>-emissions of ÖBB rail freight transport compared to the truck ..... 1:21

\* tkm = tonne-kilometre; \*\* TEU = Twenty-foot Equivalent Unit; \*\*\* Figures 2017

## Every minute

The **Rail Cargo Group** with its twelve own freight carriers operates just under **512,000 trains annually** and throughout Europe. In other words, we put an average of 1,400 trains on the tracks for our customers every day, or one every minute.



# Connected in Europe and Asia

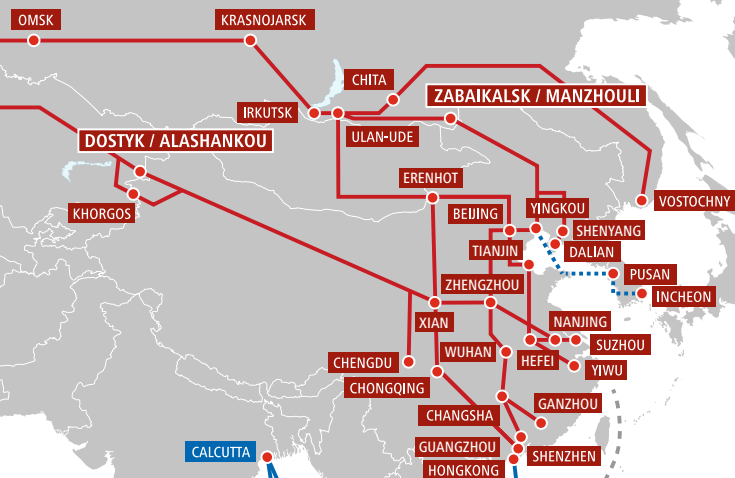
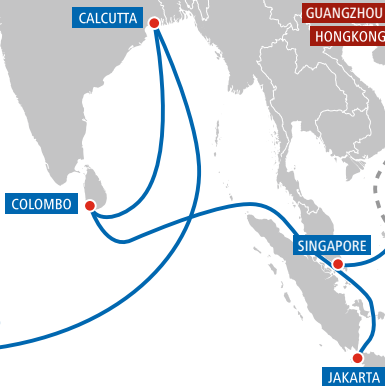


## **INTERNATIONAL.**

The Rail Cargo Group is one of the leading rail logistics companies in Europe and offers comprehensive and precise end-to-end logistics solutions. A look at the most important transport routes and flows between Europe and Asia.



## ROAD

MARITIME  
K ROAD

# Moving force

**EMPLOYEES.** It is the daily, dedicated commitment, the know-how and the experience of the employees who move a company like ÖBB.

## Personnel figures

|   |               |
|---|---------------|
| <b>Employees</b> .....                                    | <b>41,641</b> |
| – of which employees and workers .....                    | 20,944        |
| – of which tenured employees .....                        | 20,697        |
| Apprentices* (= 4.1% of ÖBB employees) .....              | 1,770         |
| <b>Total</b> .....  | <b>43,411</b> |
| – of which in Austria* .....                              | 39,137        |
| – of which abroad .....                                   | 4,274         |
| Employee nationalities (1,919 employees in Austria) ..... | 75            |
| Number of job profiles at ÖBB .....                       | 127           |

\* A further 1,930 apprentices in the General Private Foundation for Professional Training

## Employees by company

|   |               |
|---|---------------|
| <b>ÖBB Infrastruktur*</b> .....                 | <b>18,315</b> |
| <b>Rail Cargo Group*</b> .....                  | <b>9,048</b>  |
| <b>ÖBB Personenverkehr*</b> .....               | <b>7,054</b>  |
| <b>ÖBB-Holding AG and other companies</b> ..... | <b>8,994</b>  |

\* incl. apprentices



**2070** | 2001–2003  
90 still in operation

## The 11 biggest professional groups

|   |       |
|---|-------|
| Locomotive driver .....                   | 4,345 |
| Driver .....                              | 3,291 |
| Shunting .....                            | 2,730 |
| Dispatcher .....                          | 2,520 |
| Rail vehicle technology craft .....       | 2,151 |
| Engineering craft .....                   | 2,045 |
| Train attendant /Ticket inspector .....   | 1,326 |
| Scheduling and order processing .....     | 903   |
| Control and safety technology craft ..... | 824   |
| Storage .....                             | 774   |
| Electrical engineering craft .....        | 728   |

## Apprentices

|   |           |
|---|-----------|
| Apprenticeship facilities .....         | 9         |
| Apprentice hostels .....                | 4         |
| <b>Apprenticeship professions .....</b> | <b>22</b> |

## 73 percent

of the railway lines in Austria are electrified, but more than **90 percent of passenger trains** in the ÖBB network run on electricity. The annual passenger kilometre performance results in savings on CO<sub>2</sub> emissions of **2.4 million tonnes**. In addition, another 1.1 million tonnes of CO<sub>2</sub> emissions are saved by the Rail Cargo Group's freight traffic services.



|  |              |
|--|--------------|
| <b>Apprentices (number)*</b> .....   | <b>1,963</b> |
| Track construction technology .....  | 299          |
| Metals technology – mechanical engineering .....   | 288          |
| Electrical engineering – installation and operating tech. ....                                       | 206          |
| Railway electrical engineering .....   | 194          |
| Railway safety technology .....  | 184          |
| Office administrator .....   | 61           |
| Forwarding agent and forwarding logistics .....  | 107          |
| Railway operating technology .....   | 105          |
| Mechatronics – automation technology .....   | 96           |
| Mobility service .....   | 90           |
| Railway transport technology .....   | 74           |
| Railway vehicle maintenance technology .....   | 65           |
| Railway telecommunications technology .....  | 60           |
| Metal working .....  | 47           |
| Electronics – information and telecommunications tech. ....  | 36           |
| Body construction technology/automotive technology<br>(utility vehicle) and system electronics ..... | 33           |
| Finance and accounting assistant .....   | 8            |
| Electrical engineering – electrical and building technology** ..                                     | 6            |
| Electronics – applied electronics .....  | 2            |
| Cleaning technology .....  | 2            |
| Operating logistician .....  | 1            |

\* incl. foundation apprentices, as of 1 September 2018; \*\* no longer offered since 2017



## Internal training and development

**ÖBB academy: Employees in training ..... 1,718**

ÖBB academy: participant days ..... 3,153.5

**ÖBB education: courses ..... 778**

ÖBB education: participant days ..... 13,578

## Finance, Accounting and Purchasing

**Payment transactions processed ..... 1.3 mil.**

Incoming invoices processed

by the BCC creditors ..... 757,734

Outgoing invoices cleared/booked

by BCC customers ..... 825,997

Orders via ÖBB purchase catalogue PROCAT ..... 325,000

## Information technology

Standard workstations\* ..... 22,449

Special workstations\* ..... 5,530

SIM cards ..... 59,981

Number of servers\* ..... 2,799

Number of databases\* ..... 3,942

Defended SPAM emails (per year) ..... 45 mil.

\* in the month of May

# 95 Mio.

**bookings** were processed on **50,000 POS systems and vending machines**. If we were to print this list out, it would result in a paper trail from Vienna to Berlin.



# The new Southern line

**INTERNATIONAL AXIS.** At a fast pace from Vienna Central Station through the Semmering Base Tunnel, along the Koralm Railway heading to the south.

## Vienna Central Station (since 2015)

|   |          |
|---|----------|
| Total area of new bridge construction (m <sup>2</sup> ) ..... | 30,000   |
| Length of track (km) .....                                    | 100      |
| Switch points .....   | 300      |
| Covered island platforms (fully accessible) .....             | 5        |
| Platform edges .....  | 10       |
| <b>Connections to suburban railway lines .....</b>            | <b>8</b> |
| <b>Underground lines .....</b>                                | <b>1</b> |
| <b>Tram lines .....</b>                                       | <b>3</b> |
| <b>Bus lines .....</b>  | <b>2</b> |
| Parking spaces in underground car parks .....                 | 630      |
| Bicycle parking spaces in bicycle stations .....              | 1,000    |

## Rail Freight Centre Vienna South (since 2017)

|                           |    |
|---------------------------|----|
| Area (ha) .....           | 55 |
| Track length (km)* .....  | 27 |
| Switch points* .....      | 96 |
| Loading track group ..... | 1  |
| Gantry cranes .....       | 2  |



Handling capacity full expansion (ITU per year)\*\* ..... 420,000

\* refers to full expansion \*\* ITU - Intermodal Transport Unit

### **Pottendorfer line (new from 2023)**

|  |     |
|--|-----|
| Length of Pottendorfer line (km) .....                 | 52  |
| Newly constructed and updated train stations .....     | 2   |
| Train stations in planning or under construction ..... | 6   |
| Bridges to be built .....                              | 26  |
| Removed railway crossings .....                        | 20  |
| New line under construction* .....                     | 40% |
| Possible top speed (km/h) .....                        | 200 |

\* Existing route 100% in operation

### **Semmering Base Tunnel (from 2026)**

|   |        |
|---|--------|
| Tunnel length (km) .....                              | 27.3   |
| Maximum incline (per mil) .....                       | 8.4    |
| Number of tunnel borings .....                        | 14     |
| Possible top speed (km/h) .....                       | 230    |
| Travel time saved (in minutes) .....                  | 30     |
| Possible towing capacity for one locomotive (t) ..... | 1,600  |
| Tunnel kilometres already drilled .....               | 33%    |
| Material excavated until now (m <sup>3</sup> ) .....  | 6 mil. |

**VIENNA CENTRAL STATION** | 1,067 trains per day



## Koralm railway (from 2025)

|  |      |
|--|------|
| Length of Koralm railway (km) .....                | 130  |
| Length of Koralm tunnel (km) .....                 | 33   |
| Number of tunnels (total length 47 km) .....       | 12   |
| Newly constructed and updated train stations ..... | 23   |
| Track under construction .....                     | 100% |
| Possible top speed (km/h) .....                    | 250  |
| Track in operation .....                           | 21%  |
| Railway stations in operation .....                | 11   |

## New speed (from 2026)

Section ..... current travel time   future travel time   .. time savings

|                            |            |            |             |
|----------------------------|------------|------------|-------------|
| <b>Vienna – Graz</b> ..... | 2:35 ..... | 1:50 ..... | <b>0:45</b> |
|----------------------------|------------|------------|-------------|

|                                  |            |            |             |
|----------------------------------|------------|------------|-------------|
| <b>Vienna – Klagenfurt</b> ..... | 3:55 ..... | 2:40 ..... | <b>1:15</b> |
|----------------------------------|------------|------------|-------------|

|                                |             |            |             |
|--------------------------------|-------------|------------|-------------|
| <b>Graz – Klagenfurt</b> ..... | 2:00* ..... | 0:45 ..... | <b>1:15</b> |
|--------------------------------|-------------|------------|-------------|

\* Bus connection



**1216** | 2006–2008  
50 still in operation



# Economic driving force

**ECONOMIC FACTOR RAIL.** The rail sector is a driving force in Austria's economy – as a customer, as an engine of innovation, as an employer ...

## Contribution of ÖBB value-added

|   |             |
|---|-------------|
| <b>Share of gross value-added Austria .....</b> | <b>1.5%</b> |
| Total gross value-added (EUR) .....             | 4.9 bn.     |
| Direct gross value-added ÖBB (EUR) .....        | 3.8 bn.     |
| Value-added multiplier .....                    | 1.3         |

## Employer and employment

|  |             |
|--|-------------|
| <b>Percentage of Austrian working population .....</b> | <b>1.5%</b> |
| Total employment (headcounts) .....                    | 62.000      |
| Direct employment effect of ÖBB (headcounts) .....     | 41,500      |
| Employment multiplier .....                            | 1.5         |

## Taxes and fees or income taxes

|   |             |
|---|-------------|
| <b>Share of total fiscal effect</b>           |             |
| <b>in total tax revenue .....</b>             | <b>1.4%</b> |
| Overall fiscal impact (EUR) .....             | 1.9 bn.     |
| Taxes and fees contributed by ÖBB (EUR) ..... | 1.4 bn.     |

Source: Economica Institute studies, 2018 (data from 2016)

### **18 Ebenfurth**

Faster travel to Vienna with the Ebenfurth loop.

**P:** 205 mil. EUR, **B:** 2026

### **19 Wr. Neustadt – Loipersdorf-Schattendorf**

Electrification over a length of 25 km to improve passenger and freight traffic. **P:** 60 mil. EUR, **B:** 2026

### **20 Semmering Base Tunnel**

Construction of a 27 km long twin-tube tunnel, travel time reduction for Vienna – Graz: 30 min. **P:** 3,280 mil. EUR, **B:** 2026

### **21 Bruck a. d. Mur – Graz**

Optimisation of the infrastructure between Bruck a. d. Mur and Graz as part of the new Southern line. **P:** 212 mil. EUR, **B:** 2027

### **22 Graz East Station – Jennersdorf**

Electrification over a length of 75 km to improve passenger and freight traffic. **P:** 122 mil. EUR, **B:** 2027

### **23 Graz – Weitendorf**

Expansion of the Koralm railway between Graz and Weitendorf. **P:** 417 mil. EUR, **B:** 2025

### **24 Koralm Railway Graz – Klagenfurt**

New 130 km section as part of the new Southern line, time gained: 2 hours 11 minutes **P:** 5,253 mil. EUR, **B:** 2025

### **25 Villach South Cargo Terminal**

Construction of a multifunctional terminal in Fürnitz to fulfil future market requirements. **P:** 97 mil. EUR, **B:** 2027

### **26 Karawanks Tunnel**

Update of the Karawanks Tunnel including an increase in tunnel safety. **P:** 73 mil. EUR\*, **B:** 2021

\* Share of Austria

# Austria: Line and station project

Infrastructure projects ÖBB master plan (RPL) 2018–2023.



approx. € **1 bn.**  
RPL 2018-2023  
Increase in safety

ETCS expansion  
BFS continuation  
Construction of train tracking checkpoints  
Conversion of grade crossings



approx. € **600 mil.**  
per year in  
maintenance



approx. € **590 mil.**  
per year in  
reinvestment



approx. € **25 mil.**  
per year  
Construction > 2,000 car parking spaces  
Construction > 1,000 Bike & Ride parking spaces



approx. € **140 mil.**  
RPL 2018-2023  
Terminals (Wels, Wolfurt, Linz)

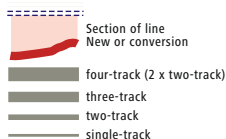


approx. € **80 mil.**  
RPL 2018-2023  
Expansion of WLAN,  
mobile communications

**St. Margrethen-Lauterach**  
Expansion  
€186 mil. | 2021



**Feldkirch-national border**  
FL.A.CH. local transport expansion  
€164 mil. | 2027



**Linz Freight Station West**  
4-track expansion  
**€336.1 mil. | 2030**

**Linz-Wels**  
4-track expansion  
**€1,252 mil. | 2026**

**Linz Freight  
Station Stadthafen**  
Modernisation  
Freight tracks  
**€43 mil. | 2021**

**Linz-Summe**  
Modernisation  
**€75 mil. | 20**

**Wels-Passau**  
Modernisation  
**€156 mil. | 2021**

**Steindorf b. Str.-Braunau**  
Enhancement  
**€190 mil. | 2029**

**Brenner Northern Approach**  
€75 mil. | Planning




**Brenner Base Tunnel**  
€4.643 mil. | 2027

 Villach Süd  
Cargo Terminal  
€97 mil. | 2027

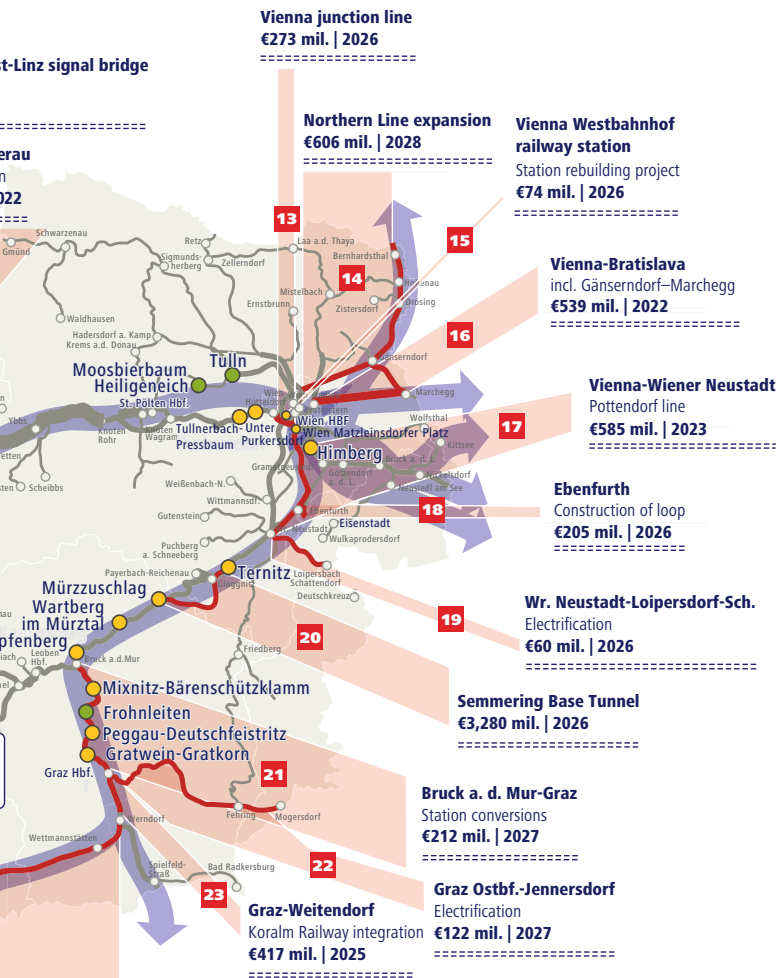
**East Tyrol | Phase 1**  
Expansion suitable  
for local transport  
**€57 mil. | 2020**

**Karawanks Tunnel**  
€73 mil. | 2021

**Koralm Railway**  
€5,253 mil. | 202

-  Station/stop  
New/conversion (in planning)
-  Station/stop  
New/conversion (under construction)
-  Station/stop

### TEN-T Core Network Corridors



Graz-Klagenfurt

5

## Core network corridors in Austria

**Scandinavia-Mediterranean Core Network Corridor** with Brenner Base Tunnel

**Rhine-Danube Core Network Corridor** with the Western line at its centre

**Oriental/Eastern Mediterranean Core Network Corridor**

**Baltic-Adriatic Core Network Corridor** with Semmering Base Tunnel and Koralm railway

**9 Linz – Wels**

Four-track expansion of the Western line between Linz and Wels. **P:** 1,252 mil. EUR, **B:** 2026 onwards.

**10 Linz shunting station Stadthafen**

Conversion and expansion into a modern shunting station, including electrification. **P:** 43 mil. EUR, **B:** 2021

**11 Linz shunting station West – Linz Signal Bridge**

Through-connection of the four-tracked Western line. **P:** 336.1 mil. EUR, **B:** 2030

**12 Linz – Summerau**

Modernisation of the line and of 7 train stations. **P:** 75.3 mil. EUR, **B:** 2022

**13 Vienna junction line**

Increasing the appeal of the suburban railway service with 15 minute intervals; new stops. **P:** 273 mil. EUR, **B:** 2026

**14 Northern line expansion**

Expansion of the line to the Czech border. **P:** 606 mil. EUR, **B:** 2028

**15 Vienna Westbahnhof.**

Adaptation of the existing infrastructure to future transport requirements. **P:** 74 mil. EUR, **B:** 2026

**16 Vienna – Bratislava**

The existing line from Vienna to Bratislava will be selectively expanded to two tracks and electrified. **P:** 539 mil. EUR, **B:** 2023

**17 Vienna – Wiener Neustadt (Pottendorfer Line)**

Two-track expansion of the existing line to relieve the Southern line. **P:** 585 mil. EUR, **B:** 2023

## Construction projects Austria\*

### **1 St. Margrethen – Lauterach**

Expansion for local traffic, new stop at Lauterach West.

**Project volume (P):** 186 mil. EUR, **Built by (B):** 2021

### **2 Rail Freight Center Wolfurt**

Raising the capacity of Wolfurt as a rail freight location and improving the transport connection. **P:** 61 mil. EUR, **B:** 2018

### **3 Feldkirch – state border**

FL.A.CH. Short-distance transport expansion in the border region with Liechtenstein and Switzerland. **P:** 164 mil. EUR, **B:** 2027

### **4 Brenner Base Tunnel (BBT)**

Construction of a 55 km two-tube tunnel by 2026

**P:** 4,643 mil. EUR\*\*, **B:** 2027

### **5 Brenner north inlet**

Planning of an efficient, environmentally friendly approach from Germany to the BBT. **P:** 75 mil. EUR, **B:** 2018

### **6 East Tyrol | Phase 1**

Modernisation of Lienz station, making the Drautal railway more appealing. **P:** 57 mil. EUR, **B:** 2020

### **7 Steindorf b. Str. – Braunau**

Making the Mattigtalbahnhof more attractive, incl. provision of accessibility and measures for increasing security.

**P:** 190 mil. EUR, **B:** 2029

### **8 Wels – Passau**

Expansion of the approx. 80 km-long existing line including station remodelling and ETCS. **P:** 156 mil. EUR, **B:** 2021

\* Source: bmvit – Master Plan 2018–2023\*\* share of Austria

# The railway in Austria

**SATISFIED CUSTOMERS.** The most frequented railway stations in Austria, the number of trains per day and the results of the customer satisfaction survey.

## Austria's busiest train stations

Passenger movements per day

|  |         |
|--|---------|
| <b>1</b> Vienna Central Station: 1,067 trains per day* .....     | 123,500 |
| <b>2</b> Vienna Meidling: 813 .....                              | 78,226  |
| <b>3</b> Vienna Mitte: 701 .....                                 | 61,872  |
| <b>4</b> Vienna Praterstern: 629 .....                           | 59,153  |
| <b>5</b> Vienna Floridsdorf: 610 .....                           | 51,957  |
| <b>6</b> Vienna Handelskai: 808 .....                            | 42,519  |
| <b>7</b> Linz Central Station (Upper Austria): 545 .....         | 40,861  |
| <b>8</b> Innsbruck Central Station (Tyrol): 315 .....            | 38,516  |
| <b>9</b> Wr. Neustadt Central Station (Lower Austria): 506 ..... | 35,847  |
| <b>10</b> Vienna Rennweg: 629 .....                              | 30,146  |

## The busiest stations in the other federal provinces

|   |        |
|---|--------|
| <b>11</b> St. Pölten (Lower Austria): 468 .....                   | 29,094 |
| <b>12</b> Salzburg Central Station (Salzburg): 439 .....          | 28,651 |
| <b>13</b> Graz Central Station (Styria): 352 .....                | 25,511 |
| <b>22</b> Klagenfurt Central Station (Carinthia): 180 .....       | 14,580 |
| <b>25</b> Feldkirch Railway Station (Vorarlberg): 189 .....       | 13,797 |
| <b>118</b> Neusiedl am See Railway Station (Burgenland): 80 ..... | 2,610  |

\* of which platforms 1, 2: 509; platforms 3–12: 558



## ÖBB customer satisfaction survey

(school grading system)

|   |            |
|---|------------|
| <b>Total grade .....</b>  | <b>2.1</b> |
| Passengers feel safe on the train .....                         | 1.6        |
| Regular announcements on the train .....                        | 1.7        |
| Trains on time .....  | 1.8        |
| Personal advice when booking at the counter .....               | 1.8        |
| Train station accessibility .....                               | 1.8        |
| Personal service offered on the train .....                     | 1.9        |
| Meals and beverages provided on the train .....                 | 1.9        |
| Information at the train station .....                          | 1.9        |
| Information, ticket purchase, reservation via the app .....     | 2.0        |
| Cleanliness of trains .....                                     | 2.0        |
| Cleanliness and condition of train stations .....               | 2.0        |
| Passengers feel safe at the station .....                       | 2.0        |
| Train intervals .....   | 2.1        |
| Buy tickets at the ticket machine .....                         | 2.1        |
| Convenience, travel comfort on the train .....                  | 2.1        |
| Announcements at the train station in case of irregularities .. | 2.2        |
| Suitable connections to other trains .....                      | 2.2        |
| Train station infrastructure, guidance system .....             | 2.3        |
| Information, ticket purchase, reservation online .....          | 2.3        |
| Total travel time, trip duration .....                          | 2.3        |
| Train value for money .....                                     | 2.3        |
| Announcements on the train if delayed .....                     | 2.3        |

Source: ÖBB Customer Satisfaction Analysis as part of the VCÖ Bahntest 2019  
(Railway Test)

# Sustainable transport

**CLIMATE PROTECTION.** ÖBB is Austria's biggest provider of electromobility services and thus also the biggest climate protection company in the country.

## Energy management and climate protection

**Electricity provided** (GWh per year) ..... **2,323**

**Traction current provided** (GWh per year) ..... **1,910**

## Electricity

### Generation of traction current

from hydropower ..... 95%

from other renewable energy sources ..... 5%

## Power stations

**Hydroelectric power plants (traction power)** ..... **8**

**Hydroelectric power plants (three-phase current)** ..... **2**

Transformer stations ..... 5

Inverter stations ..... 2

Substations ..... 62

Traction power lines 110 kV/132 kV (km) ..... 2,064

Traction power lines 55 kV (km) ..... 69

Central control stations ..... 1

Energy control stations ..... 2



**Railjet** | 2007–2016  
60 units in operation

## Savings on energy and emissions\*

**Energy saved vs. 2017 (GWh) ..... 10**

**ÖBB climate balance** – total greenhouse gas emissions  
of ÖBB: CO<sub>2</sub> equivalent (t per year) ..... **375,217**

**Greenhouse gas emissions saved through**

ÖBB rail transport (t CO<sub>2</sub> per year) ..... **3.5 mil.**

CO<sub>2</sub> emissions in ÖBB passenger transport (g/pkm\*\*) ..... 14.3

CO<sub>2</sub> emissions from ÖBB freight traffic (g/tkm\*\*\*) ..... 4.1

CO<sub>2</sub>-emissions Postbus (g/pkm\*\*) ..... 88.2

CO<sub>2</sub> emissions for ÖBB passenger services  
compared to cars/airplanes ..... 1:15/1:31

CO<sub>2</sub>-emissions of ÖBB freight traffic  
compared to trucks ..... 1:21

\* Figures for 2017; \*\* pkm = passenger-kilometres; \*\*\* tkm = tonne-kilometres

## Electromobility

**Share of the electrified railway lines ..... 73%**

Number of e-charging stations ..... 35

Number of e-cars in the fleet ..... 30

## 14 metres

is the width of a **two-tracked electrified high-capacity railway line**. A motorway with the same capacity requires three lanes in each direction and is about 37 metres wide. With the same transport capacity, the rail needs only about **one-third to one-sixth of the area compared to a road** and thus enables very surface-efficient traffic.



## Traction current production

|   |       |
|---|-------|
| in our own hydroelectric power plants .....         | 29%   |
| in partner hydropower plants .....                  | 22%   |
| drawn from public 50-Hz network and converted ..... | 49%   |
| Traction current input from overhead cable          |       |
| (GWh per year) .....                                | 1,847 |
| Three-phase input (GWh per year) .....              | 310   |
| Heat consumption (GWh per year) .....               | 328   |

## Nature conservation and biodiversity

|   |          |
|---|----------|
| Rockfall and avalanche barriers (km) .....  | 195      |
| Managed protection forest (ha) .....  | 3,370    |
| Total water consumption (m <sup>3</sup> per year) .....                             | 2.8 mil. |
| Trees in tree register* (pieces) .....  | 11,769   |
| Different tree species* (pieces) .....  | 204      |
| Other open spaces (gardens, meadows,<br>embankments etc.)* (km <sup>2</sup> ) ..... | 7.9      |
| Number of bird protection caps fitted .....   | 14,462   |
| – Experimental sections with wildlife warners .....                                 | 5        |
| – in km .....   | 9.6      |

\* on land under administration of ÖBB-Immobilien GmbH



**1293** | 2018–2019  
108 ordered, 22 still in operation

# ÖBB in the federal provinces. Facts & Figures

**Moving Austria.** ÖBB is the most important mobility provider in local and regional transport and makes Austria a little greener with every passenger kilometre. We take a look at the key figures for the individual federal provinces and compare them with nationwide figures.



# Burgenland



**IN THE EAST.** With 3,962 km<sup>2</sup>, – of which about seven percent is water – Burgenland is one of the smaller provinces of Austria and home to about 293,000 people.

## Travelling by train

**Local transport passengers** ..... **4.1 mil.**

Local transport trains per day ..... 263

**Suburban railway lines\*** ..... **0**

Train kilometres local transport ..... 2.3 mil.

Local transport passenger kilometres ..... 126.0 mil.

**Freight transported (tonnes per year)** ..... **0.975 mil.**

\* Total number of suburban railway lines in the eastern region  
(Vienna, Lower Austria, Burgenland): 10 (partly crossing province borders)

## The Postbus is rolling

**Passengers** ..... **9 mil.**

Lines ..... 33

Buses ..... 156



**NEUSIEDL/SEE TRAIN STATION** | 2,610 passengers  
No. 1 in Burgenland, no. 118 nationwide  
(see page 40)

|                                   |                 |
|-----------------------------------|-----------------|
| <b>Stops</b> .....                | <b>812</b>      |
| communities covered .....         | 136             |
| communities covered (share) ..... | 80 %            |
| <b>Kilometres travelled</b> ..... | <b>5.5 mil.</b> |

## Infrastructure

|  |            |
|--|------------|
| <b>Track length</b> (length in km) ..... | <b>155</b> |
| <b>Train stations and stops</b> .....    | <b>29</b>  |
| – of which with WiFi .....               | 1          |
| Parking spaces .....                     | 3,200      |
| – of which for cars .....                | 2,154      |
| – of which for two-wheelers .....        | 1,046      |
| Railway crossings .....                  | 107        |
| – of which technically secured .....     | 80         |
| – of which not technically secured ..... | 27         |
| Shunting sites .....                     | 0          |

## Infrastructure investments in 2018 (in EUR ..... **28 mil.**

Investment volume according to 2018–2023 master plan incl.  
reinvestments + P & R + noise protection (in EUR) ..... 116 mil.

## Employees

|                                     |            |
|-------------------------------------|------------|
| <b>Employees</b> .....              | <b>373</b> |
| – of which female .....             | 11         |
| <b>– of which apprentices</b> ..... | <b>1</b>   |
| of which female .....               | 0          |

# Carinthia



**AUSTRIA'S SOUTH.** The federal province extends over 9,538 km<sup>2</sup>. It forms the southern end of Austria and has about 561,000 inhabitants.

## Travelling by train

|  |                   |
|--|-------------------|
| <b>Local transport passengers</b> .....            | <b>7.9 mil.</b>   |
| Local transport trains per day .....               | 276               |
| <b>Suburban railway lines</b> .....                | <b>4</b>          |
| Suburban railway trains per day* .....             | 241               |
| Train kilometres local transport .....             | 4.9 mil.          |
| Local transport passenger kilometres .....         | 247.9 mil.        |
| <b>Freight transported (tonnes per year)</b> ..... | <b>4.772 mil.</b> |

\* As at: 11 April 2019

## The Postbus is rolling

|                                   |                  |
|-----------------------------------|------------------|
| <b>Passengers</b> .....           | <b>16 mil.</b>   |
| Lines .....                       | 68               |
| Buses .....                       | 177              |
| <b>Stops</b> .....                | <b>1,855</b>     |
| Communities covered .....         | 123              |
| Communities covered (share) ..... | 93%              |
| <b>Kilometres travelled</b> ..... | <b>10.7 mil.</b> |



**KLAGENFURT TRAIN STATION** | 14,580 passengers  
No. 1 in Carinthia, no. 22 nationwide  
(see page 40)



## Infrastructure

|  |            |
|--|------------|
| <b>Track length</b> (length in km) ..... | <b>510</b> |
| <b>Train stations and stops</b> .....    | <b>107</b> |
| – of which with WiFi .....               | 6          |
| Parking spaces .....                     | 6,940      |
| – of which for cars .....                | 3,809      |
| – of which for two-wheelers .....        | 3,131      |
| Railway crossings .....                  | 329        |
| – of which technically secured .....     | 174        |
| – of which not technically secured ..... | 155        |
| Shunting sites .....                     | 12         |

## Infrastructure investments in 2018 (in EUR) ..... **241 mil.**

Investment volume according to 2018–2023 master plan incl.  
reinvestments + P & R + noise protection (in EUR) ..... 1.67 bn.

## Employees

|                                     |              |
|-------------------------------------|--------------|
| <b>Employees</b> .....              | <b>2,968</b> |
| – of which female .....             | 242          |
| <b>– of which apprentices</b> ..... | <b>24</b>    |
| – of which female .....             | 14           |

# Lower Austria



**DIVERSE.** With 19,186 km<sup>2</sup>, Lower Austria occupies almost a quarter of the Austrian national territory and is home to 1.68 million inhabitants.

## Travelling by train

**Local transport passengers** ..... **52.5 mil.**

Local transport trains per day ..... 1,897

**Suburban railway lines\*** ..... **9**

Trains per day Suburban railway\*\* ..... 650

Train kilometres local transport ..... 26.0 mil.

Local transport passenger kilometres ..... 2,118.5 mil.

**Freight transported (tonnes per year)** ..... **16.769 mil.**

\* Total number of suburban railway lines in the eastern region  
(Vienna, Lower Austria, Burgenland): 10 (partly crossing the province borders)

\*\* As at: 11 April 2019

## The Postbus is rolling

**Passengers** ..... **41 mil.**

Lines ..... 198

Buses ..... 421

**Stops** ..... **5,727**

Communities covered ..... 494

Communities covered (share) ..... 86%

**Kilometres travelled** ..... **30.3 mil.**



**WIENER NEUSTADT CENTRAL STATION**  
35,847 passengers, no. 1 in Lower Austria,  
no. 9 nationwide (see page 40)

## Infrastructure

|  |              |
|--|--------------|
| <b>Track length</b> (length in km) ..... | <b>1,477</b> |
| <b>Train stations and stops</b> .....    | <b>348</b>   |
| – of which with WiFi .....               | 17           |
| Parking spaces .....                     | 54,588       |
| – of which for cars .....                | 35,750       |
| – of which for two-wheelers .....        | 18,838       |
| Railway crossings .....                  | 1,322        |
| – of which technically secured .....     | 650          |
| – of which not technically secured ..... | 672          |
| Shunting sites .....                     | 20           |

## Infrastructure investments in 2018 (in EUR) ..... **493 mil.**

Investment volume according to 2018–2023 master plan incl.  
reinvestments + P & R + noise control (in EUR) ..... 3.1 bn.

## Employees

|                                     |              |
|-------------------------------------|--------------|
| <b>Employees</b> .....              | <b>5,713</b> |
| – of which female .....             | 310          |
| <b>– of which apprentices</b> ..... | <b>129</b>   |
| – of which female .....             | 14           |

# Upper Austria



**THE CENTRE OF INDUSTRY.** About 1.48 million people live in Upper Austria on an area of about 11,980 km<sup>2</sup>, and about half of them live in the Linz metropolitan area.

## Travelling by train

|  |                    |
|--|--------------------|
| <b>Local transport passengers</b> .....            | <b>16.9 mil.</b>   |
| Local transport trains per day .....               | 645                |
| <b>Suburban railway lines</b> .....                | <b>4</b>           |
| Suburban railway trains per day* .....             | 228                |
| Train kilometres local transport .....             | 11.0 mil.          |
| Local transport passenger kilometres .....         | 564.6 mil.         |
| <b>Freight transported (tonnes per year)</b> ..... | <b>23.266 mil.</b> |

\* As at: 11 April 2019

## The Postbus is rolling

|                                   |                  |
|-----------------------------------|------------------|
| <b>Passengers</b> .....           | <b>30 mil.</b>   |
| Lines .....                       | 154              |
| Buses .....                       | 287              |
| <b>Stops</b> .....                | <b>3,708</b>     |
| communities covered .....         | 397              |
| Communities covered (share) ..... | 90%              |
| <b>Kilometres travelled</b> ..... | <b>19.0 mil.</b> |



**LINZ CENTRAL STATION** | 40,861 passengers  
No. 1 in Upper Austria, no. 7 nationwide  
(see page 40)

## Infrastructure

|  |            |
|--|------------|
| <b>Track length</b> (length in km) ..... | <b>866</b> |
| <b>Train stations and stops</b> .....    | <b>223</b> |
| – of which with WiFi .....               | 6          |
| Parking spaces .....                     | 16,306     |
| – of which for cars .....                | 8,481      |
| – of which for two-wheelers .....        | 7,825      |
| Railway crossings .....                  | 761        |
| – of which technically secured .....     | 286        |
| – of which not technically secured ..... | 475        |
| Shunting sites .....                     | 22         |

## Infrastructure investments in 2018 (in EUR) ..... **218 mil.**

Investment volume according to 2018–2023 master plan incl.  
reinvestments + P & R + noise control (in EUR) ..... 1.7 bn.

## Employees

|                                     |              |
|-------------------------------------|--------------|
| <b>Employees</b> .....              | <b>5,774</b> |
| – of which female .....             | 487          |
| <b>– of which apprentices</b> ..... | <b>296</b>   |
| – of which female .....             | 34           |

# Salzburg



**CITY, MOUNTAINS, LAKES.** Salzburg extends with about 7,156 km<sup>2</sup> from the foothills to the central peninsula. About 555,000 inhabitants live in this diverse federal province.

## Travelling by train

|  |                   |
|--|-------------------|
| <b>Local transport passengers</b> .....            | <b>7.4 mil.</b>   |
| Local transport trains per day .....               | 232               |
| <b>Suburban railway lines</b> .....                | <b>2</b>          |
| Suburban railway trains per day* .....             | 135               |
| Train kilometres local traffic .....               | 4.0 mil.          |
| Local transport passenger kilometres .....         | 237.2 mil.        |
| <b>Freight transported (tonnes per year)</b> ..... | <b>2.257 mil.</b> |

\* As at: 11 April 2019

## The Postbus is rolling

|                                   |                  |
|-----------------------------------|------------------|
| <b>Passengers</b> .....           | <b>22 mil.</b>   |
| Lines .....                       | 96               |
| Buses .....                       | 254              |
| <b>Stops</b> .....                | <b>1,800</b>     |
| Communities covered .....         | 117              |
| Communities covered (share) ..... | 98%              |
| <b>Kilometres travelled</b> ..... | <b>14.6 mil.</b> |



**SALZBURG CENTRAL STATION** | 28,651 passengers  
No. 1 in Salzburg, no. 12 nationwide  
(see page 40)

## Infrastructure

**Track length** (length in km) ..... **235**

**Train stations and stops** ..... **58**

– of which with WiFi ..... 5

Parking spaces ..... 5,815

– of which for cars ..... 2,774

– of which for two-wheelers ..... 3,041

Railway crossings ..... 60

– of which technically secured ..... 51

– of which not technically secured ..... 9

Shunting sites ..... 7

**Infrastructure investments in 2018** (in EUR) ..... **64 mil.**

Investment volume according to 2018–2023 master plan incl.  
reinvestments + P & R + noise control

(in EUR) approx. .... 507 mil.

## Employees

**Employees** ..... **2,634**

– of which female ..... 207

**– of which apprentices** ..... **118**

– of which female ..... 16

# Styria



**THE GREEN ONE.** At about 16,401 km<sup>2</sup>, Styria is Austria's second-largest federal province, and its population of 1.23 million is number four in Austria.

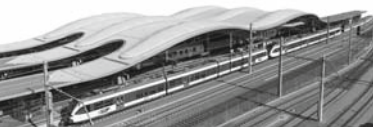
## Travelling by train

|   |                    |
|---|--------------------|
| Local transport passengers .....            | <b>11.3 mil.</b>   |
| Local transport trains per day .....        | 412                |
| Suburban railway lines .....                | <b>6</b>           |
| Suburban railway trains per day* .....      | 288                |
| Train kilometres local traffic .....        | 7.5 mil.           |
| Local transport passenger kilometres .....  | 322.2 mil.         |
| Freight transported (tonnes per year) ..... | <b>19.054 mil.</b> |

\* As at: 11 April 2019

## The Postbus is rolling

|                                   |                  |
|-----------------------------------|------------------|
| Passengers .....                  | <b>28 mil.</b>   |
| Lines .....                       | 111              |
| Buses .....                       | 263              |
| Stops .....                       | <b>3,278</b>     |
| communities covered .....         | 227              |
| communities covered (share) ..... | 79 %             |
| Kilometres travelled .....        | <b>16.5 mil.</b> |



**GRAZ CENTRAL STATION** | 25,511 passengers  
No. 1 in Styria, no. 13 nationwide  
(see page 40)



## Infrastructure

|  |            |
|--|------------|
| <b>Track length</b> (length in km) ..... | <b>750</b> |
| <b>Train stations and stops</b> .....    | <b>123</b> |
| - of which with WiFi .....               | 6          |
| Parking spaces .....                     | 12,915     |
| - of which for cars .....                | 7,660      |
| - of which for two-wheelers .....        | 5,255      |
| Railway crossings .....                  | 428        |
| - of which technically secured .....     | 216        |
| - of which not technically secured ..... | 212        |
| Shunting sites .....                     | 19         |

## Infrastructure investments in 2018 (in EUR) ..... **408 mil.**

Investment volume according to 2018–2023 master plan incl.  
reinvestments + P & R + noise control (in EUR) ..... 2.8 bn.

## Employees

|                                     |              |
|-------------------------------------|--------------|
| <b>Employees</b> .....              | <b>4,590</b> |
| - of which female .....             | 362          |
| <b>- of which apprentices</b> ..... | <b>336</b>   |
| - of which female .....             | 58           |

# Tyrol



**AMIDST THE ALPS.** Tyrol has the longest external border of 719 km. The area within the border is 12,640 km<sup>2</sup> and is home to 755,000 people.

## Travelling by train

|   |                    |
|---|--------------------|
| Local transport passengers .....            | <b>13.9 mil.</b>   |
| Local transport trains per day .....        | 372                |
| Suburban railway lines .....                | <b>6</b>           |
| Suburban railway trains per day* .....      | 251                |
| Train kilometres local traffic .....        | 7.2 mil.           |
| Local transport passenger kilometres .....  | 546.5 mil.         |
| Freight transported (tonnes per year) ..... | <b>15.996 mil.</b> |

\* As at: 11 April 2019

## The Postbus is rolling

|                                   |                  |
|-----------------------------------|------------------|
| Passengers .....                  | <b>23 mil.</b>   |
| Lines .....                       | 64               |
| Buses .....                       | 503              |
| Stops .....                       | <b>1,914</b>     |
| Communities covered .....         | 222              |
| communities covered (share) ..... | 80 %             |
| Kilometres travelled .....        | <b>29.5 mil.</b> |



### INNSBRUCK CENTRAL STATION

38,516 passengers, no. 1 in Tyrol,  
no. 8 nationwide (see page 40)

## Infrastructure

|  |            |
|--|------------|
| <b>Track length</b> (length in km) ..... | <b>421</b> |
| <b>Train stations and stops</b> .....    | <b>94</b>  |
| – of which with WiFi .....               | 8          |
| Parking spaces .....                     | 7,816      |
| – of which for cars .....                | 3,929      |
| – of which for two-wheelers .....        | 3,887      |
| Railway crossings .....                  | 127        |
| – of which technically secured .....     | 76         |
| – of which not technically secured ..... | 51         |
| Shunting sites .....                     | 8          |

## Infrastructure investments in 2018 (in EUR) ..... **320 mil.**

Investment volume according to 2018–2023 master plan incl.  
reinvestments + P & R + noise control (in EUR) ..... 3.1 bn.

## Employees

|                                     |              |
|-------------------------------------|--------------|
| <b>Employees</b> .....              | <b>3,280</b> |
| – of which female .....             | 192          |
| <b>– of which apprentices</b> ..... | <b>143</b>   |
| – of which female .....             | 22           |

# Vorarlberg



**AUSTRIA'S WEST.** Between Lake Constance and Arlberg as well as Switzerland and Germany about 394,000 inhabitants live on an area of almost 2,601 km<sup>2</sup>.

## Travelling by train

|  |                   |
|--|-------------------|
| <b>Local transport passengers</b> .....            | <b>13.8 mil.</b>  |
| Local transport trains per day .....               | 213               |
| <b>Suburban railway lines</b> .....                | <b>2</b>          |
| Suburban railway trains per day* .....             | 150               |
| Train kilometres local transport .....             | 3.2 mil.          |
| Local transport passenger kilometres .....         | 341.2 mil.        |
| <b>Freight transported (tonnes per year)</b> ..... | <b>3.394 mil.</b> |

\* As at: 11 April 2019

## The Postbus is rolling

|                                   |                  |
|-----------------------------------|------------------|
| <b>Passengers</b> .....           | <b>24 mil.</b>   |
| Lines .....                       | 24               |
| Buses .....                       | 145              |
| <b>Stops</b> .....                | <b>1,090</b>     |
| Communities covered .....         | 78               |
| Communities covered (share) ..... | 81%              |
| <b>Kilometres travelled</b> ..... | <b>11.6 mil.</b> |



**FELDKIRCH TRAIN STATION** | 13,797 passengers  
No. 1 in Vorarlberg, no. 25 nationwide  
(see page 40)

## Infrastructure

|   |            |
|---|------------|
| <b>Track length</b> (length in km) .....      | <b>111</b> |
| <b>Train stations and stops</b> .....         | <b>34</b>  |
| – of which with WiFi .....                    | 6          |
| Parking spaces .....                          | 5,249      |
| – of which for cars .....                     | 1,169      |
| – of which for two-wheelers .....             | 4,080      |
| Railway crossings (incl. Liechtenstein) ..... | 27         |
| – of which technically secured .....          | 26         |
| – of which not technically secured .....      | 1          |
| Shunting sites .....                          | 3          |

## Infrastructure investments in 2018 (in EUR) ..... **53 mil.**

Investment volume according to 2018–2023 master plan incl.  
reinvestments + P & R + noise control

(in EUR) approx. .... 307 mil.

## Employees

|                                     |              |
|-------------------------------------|--------------|
| <b>Employees</b> .....              | <b>1,259</b> |
| – of which female .....             | 148          |
| <b>– of which apprentices</b> ..... | <b>102</b>   |
| – of which female .....             | 17           |

# Vienna



**CAPITAL OF AUSTRIA.** In Vienna, which is both a city and a federal province, almost 1,89 million inhabitants live on about 415 km<sup>2</sup>.

## Travelling by train

**Local transport passengers ..... 96.7 mil.**

Local transport trains per day ..... 1,531

**Suburban railway lines\* ..... 10**

Trains per day Suburban railway\*\* ..... 916

Train kilometres local traffic ..... 7.9 mil.

Local transport passenger kilometres ..... 953.5 mil.

**Freight transported (tonnes per year) ..... 6.742 mil.**

\* Total number of suburban railway lines in the eastern region  
(Vienna, Lower Austria, Burgenland): 10 (partly crossing the province borders)

\*\* As at: 11 April 2019

## The Postbus is rolling

**Passengers ..... 13.7 mil.**

Lines ..... 3

Buses ..... 109

**Stops ..... 464**

communities covered ..... 1

communities covered (share) ..... 100 %

**Kilometres travelled ..... 4.5 mil.**



## Infrastructure

|  |            |
|--|------------|
| <b>Track length</b> (length in km) ..... | <b>188</b> |
| <b>Train stations and stops</b> .....    | <b>54</b>  |
| – of which with WiFi .....               | 23         |
| Parking spaces .....                     | 2,530      |
| – of which for cars .....                | 1,222      |
| – of which for two-wheelers .....        | 1,308      |
| Railway crossings .....                  | 50         |
| – of which technically secured .....     | 34         |
| – of which not technically secured ..... | 16         |
| Shunting sites .....                     | 12         |

### Infrastructure investments in 2018 (in EUR) ..... **120 mil.**

Investment volume according to 2018–2023 master plan incl.  
reinvestments + Park & Ride facilities + noise control  
(in EUR) approx. .... 646 mil.

## Employees

|                                     |               |
|-------------------------------------|---------------|
| <b>Employees</b> .....              | <b>12,471</b> |
| – of which female .....             | 2,409         |
| <b>– of which apprentices</b> ..... | <b>621</b>    |
| of which female .....               | 116           |

# ÖBB train units

LONG-DISTANCE

**Railjet** (seven-unit)

Length incl. traction unit in m ..... 206

Seats ..... 408

**Nightjet** (3–11 coaches)

Length incl. traction unit in m 99–310

Seats\* ..... 156–588

\* Standard, couchette and sleeping car places

LOCAL AND REGIONAL TRANSPORT

**Talent 4023** (three-unit)

Length in m ..... 52/67

**Talent 4024/4124** (four-unit)

Seats ..... 151/199

**Desiro 5022**

Length in m ..... 42

Seats ..... 117



**PASSENGER TRANSPORT.** The most important ÖBB train sets for long-distance transport as well as for local and regional transport at a glance.



|                                       |            |              |           |
|---------------------------------------|------------|--------------|-----------|
| Weight incl. traction unit in t ..... | <b>446</b> | Number ..... | <b>60</b> |
| Top speed in km/h .....               | <b>230</b> |              |           |



|  |   |            |
|--|---|------------|
| Weight incl. traction unit in t <b>233–680</b> | Number of seat cars (64), couchettes (71) and sleeping cars (50)* ..... | <b>185</b> |
| Top speed in km/h* .....                       |   |            |

\* with car transporter units 160                      \* plus car transport carrier (34)



|                         |                   |                   |                    |
|-------------------------|-------------------|-------------------|--------------------|
| Weight in t .....       | <b>95/115/117</b> | Power in kW ..... | <b>1,440/1,520</b> |
| Top speed in km/h ..... | <b>140</b>        | Number* .....     | <b>187</b>         |

\* 34 of which already in the new Cityjet design as at 1 June 2019



|                         |            |                   |                |
|-------------------------|------------|-------------------|----------------|
| Weight in t .....       | <b>71</b>  | Power in kW ..... | <b>2 x 315</b> |
| Top speed in km/h ..... | <b>120</b> | Number* .....     | <b>60</b>      |

\* 30 of which already in the new Cityjet design as at 1 June 2019

**LOCAL & REGIONAL TRAFFIC.** Train units for commuter services on lines throughout Austria.



**Cityjet – Desiro ML**  
(since December 2015)

|                   |                        |
|-------------------|------------------------|
| Length in m ..... | 75                     |
| Seats .....       | 240 (R-Bahn)           |
| .....             | 258 (Suburban railway) |



**CityShuttle push-pull train  
CRD**

|                                 |    |
|---------------------------------|----|
| Length (per car) in m .....     | 26 |
| Seats in control car .....      | 44 |
| Seats in intermediate car ..... | 80 |



**Double-stack push-pull car  
DOSTO**

|                                 |     |
|---------------------------------|-----|
| Length (per car) in m .....     | 27  |
| Seats in control car .....      | 86  |
| Seats in intermediate car ..... | 114 |



**4020 – Vienna suburban  
railway (three-unit)**

|                   |     |
|-------------------|-----|
| Length in m ..... | 69  |
| Seats .....       | 184 |



Weight in t .... 146 Top speed in km/h ..... 160  
 Power in kW ..... 2,600

Number (as of 1 June 2019)\* ..... **164**

\* Another set is currently being tested as a battery vehicle at Siemens.



Weight of control car in t ..... **40**  
 Weight of intermediate car in t ..... **37**  
 Top speed in km/h ..... **160**

Number of control cars  
 (as at 1 June 2019) ..... **100**



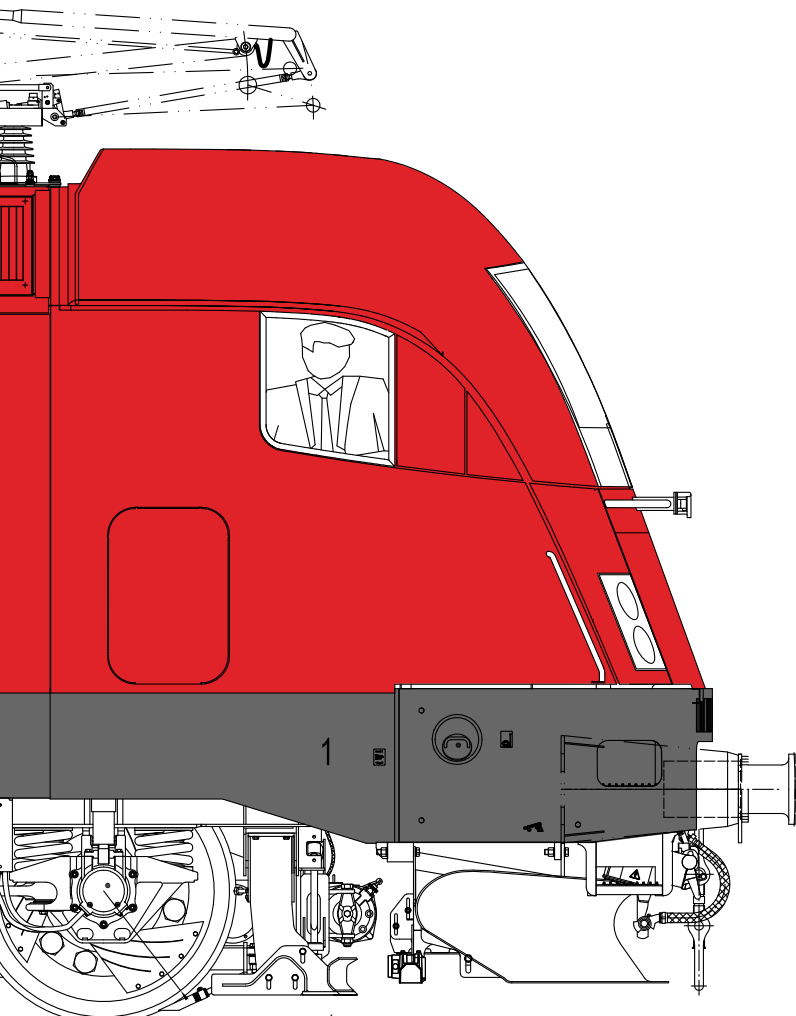
Weight of control car in t ..... **51**  
 Weight of intermediate car in t ..... **48**

Top speed in km/h ..... **140**  
 Number (control car) ..... **67**



Weight in t ..... **129**  
 Top speed in km/h ..... **120**

Power in kW ..... **1,200**  
 Number (as at 1 June 2019) ..... **66**



**1016/1116** | 2000–2006  
50/282 still in operation

# ÖBB locomotives\*

## Traction unit series 2067

(for drawing see page 4)

|                                |                                    |
|--------------------------------|------------------------------------|
| Number ...                     | 26 still in operation, 111 built   |
| Manufacturer (MFG) .....       | .....                              |
| .....                          | <b>Simmering-Graz-Pauker (SGP)</b> |
| Year of manufacture .....      | 1959–1977                          |
| Wheel arrangement .....        | C dh                               |
| Tank capacity in l .....       | 1,600                              |
| Drive power in kW .....        | 442                                |
| Top speed in km/h .....        | 65                                 |
| Total weight in t .....        | 49                                 |
| Length over buffers in m ..... | 10.5                               |

## Series 2043 (p. 8)

|                                |                                |
|--------------------------------|--------------------------------|
| Number ..                      | 7 still in operation, 77 built |
| Manufacturer .....             | Jenbacher Werke                |
| Year of manufacture .....      | 1964–1977                      |
| Tank capacity in l .....       | 1,700                          |
| Drive power in kW .....        | 1,104                          |
| Top speed in km/h .....        | 110                            |
| Total weight in t .....        | 70                             |
| Length over buffers in m ..... | .....                          |
| .....                          | 01–04: 14.8; 05–ff: 15.8       |

## Series 2143 (p. 10)

|                                |                                 |
|--------------------------------|---------------------------------|
| Number ..                      | 12 still in operation, 77 built |
| Manufacturer .....             | SGP                             |
| Year of manufacture .....      | 1965–1977                       |
| Wheel arrangement .....        | B'B'                            |
| Tank capacity in l .....       | 2,045                           |
| Drive power in kW .....        | 1,115                           |
| Top speed in km/h .....        | 110                             |
| Total weight in t .....        | 65                              |
| Length over buffers in m ..... | 15.8                            |

## Series 1142 (p. 12)

Conversion from 1042.5

|                           |                                  |
|---------------------------|----------------------------------|
| Number ..                 | 63 still in operation, 177 built |
| MFG .....                 | SGP, Conversion: ÖBB-TS          |
| Year of manufacture ..... | 1969–1977                        |
| Wheel arrangement .....   | B0'B0'                           |
| Drive power in kW .....   | 4,000                            |
| Top speed in km/h .....   | 150                              |
| Total weight in t .....   | 83                               |

|                                |      |
|--------------------------------|------|
| Length over buffers in m ..... | 16.2 |
|--------------------------------|------|

## Series 1044/1144 (p. 14)

|                                |                                   |
|--------------------------------|-----------------------------------|
| Number .....                   | 209 still in operation, 217 built |
| MFG .....                      | SGP, Conversion: ÖBB-TS           |
| Year of manufacture .....      | 1978–1995                         |
| Wheel arrangement .....        | B0'B0'                            |
| Drive power in kW .....        | 5,280                             |
| Top speed in km/h .....        | 160                               |
| Total weight in t .....        | 84                                |
| Length over buffers in m ..... | 16.1                              |

## Series 1063 (p. 16)

|                                |                                 |
|--------------------------------|---------------------------------|
| Number ..                      | 48 still in operation, 50 built |
| MFG .....                      | BBC, ELIN, SGP, Siemens         |
| Year of manufacture .....      | 1983–1991                       |
| Wheel arrangement .....        | B0'B0'                          |
| Drive power in kW .....        | 1,520                           |
| Top speed in km/h .....        | 100                             |
| Total weight in t .....        | 82                              |
| Length over buffers in m ..... | 15.6                            |

## Series 1064 (p. 18)

|                                |                         |
|--------------------------------|-------------------------|
| Number .....                   | 10 still in operation   |
| MFG .....                      | BBC, ELIN, SGP, Siemens |
| Year of manufacture .....      | 1984–1990               |
| Wheel arrangement .....        | C0'C0'                  |
| Drive power in kW .....        | 1,560                   |
| Top speed in km/h .....        | 100                     |
| Total weight in t .....        | 112                     |
| Length over buffers in m ..... | 18.5                    |

## Series 2068 (p. 20)

|                                |                                 |
|--------------------------------|---------------------------------|
| Number ..                      | 58 still in operation, 60 built |
| Manufacturer .....             | Jenbacher Werke                 |
| Year of manufacture .....      | 1989–1994                       |
| Wheel arrangement .....        | B'B' dh                         |
| Tank capacity in l .....       | 1,500                           |
| Drive power in kW .....        | 820                             |
| Top speed in km/h .....        | 100                             |
| Total weight in t .....        | 72                              |
| Length over buffers in m ..... | 13.8                            |

\* In order of year of manufacture

**Series 1163 (p. 22)**

|                                |                                |
|--------------------------------|--------------------------------|
| Number .....                   | 20 still in operation          |
| MFG .....                      | <b>BBC, ELIN, SGP, Siemens</b> |
| Year of manufacture .....      | 1994–1995                      |
| Wheel arrangement .....        | <b>B0'B0'</b>                  |
| Drive power in kW .....        | <b>1,560</b>                   |
| Top speed in km/h .....        | <b>100</b>                     |
| Total weight in t .....        | <b>80.5</b>                    |
| Length over buffers in m ..... | <b>16.4</b>                    |

**Series 1016 Taurus (p. 68)**

|                                |                        |
|--------------------------------|------------------------|
| Number .....                   | 50 still in operation  |
| Manufacturer .....             | <b>Siemens Austria</b> |
| Year of manufacture .....      | 2000–2001              |
| Wheel arrangement .....        | <b>B0'B0'</b>          |
| Drive power in kW .....        | <b>6,400</b>           |
| Top speed in km/h .....        | <b>230</b>             |
| Total weight in t .....        | <b>86</b>              |
| Length over buffers in m ..... | <b>19.3</b>            |

**Series 1116 Taurus (p. 68)**

|                                |                        |
|--------------------------------|------------------------|
| Number .....                   | 282 still in operation |
| Manufacturer .....             | <b>Siemens Austria</b> |
| Year of manufacture .....      | 2000–2006              |
| Wheel arrangement .....        | <b>B0'B0'</b>          |
| Drive power in kW .....        | <b>6,400</b>           |
| Top speed in km/h .....        | <b>230</b>             |
| Total weight in t .....        | <b>86</b>              |
| Length over buffers in m ..... | <b>19.3</b>            |

**Series 2070 Hector (p. 26)**

|                                |                       |
|--------------------------------|-----------------------|
| Number .....                   | 90 still in operation |
| Manufacturer .....             | <b>Vossloh</b>        |
| Year of manufacture .....      | 2001–2003             |
| Wheel arrangement .....        | <b>B'B'</b>           |
| Tank capacity in l .....       | <b>3,000</b>          |
| Drive power in kW .....        | <b>745</b>            |
| Top speed in km/h .....        | <b>100</b>            |
| Total weight in t .....        | <b>72</b>             |
| Length over buffers in m ..... | <b>14.1</b>           |

**Series 2016 Herkules (p. 28)**

|                           |                        |
|---------------------------|------------------------|
| Number .....              | 100 still in operation |
| Manufacturer .....        | <b>Siemens Austria</b> |
| Year of manufacture ..... | 2002–2004              |
| Wheel arrangement .....   | <b>B0'B0'</b>          |
| Tank capacity in l .....  | <b>2,800</b>           |
| Drive power in kW .....   | <b>2,000</b>           |

|                                |             |
|--------------------------------|-------------|
| Top speed in km/h .....        | <b>140</b>  |
| Total weight in t .....        | <b>80</b>   |
| Length over buffers in m ..... | <b>19.3</b> |

**Series 1216 Taurus (p. 32)**

|                                |                        |
|--------------------------------|------------------------|
| Number .....                   | 50 still in operation  |
| Manufacturer .....             | <b>Siemens Austria</b> |
| Year of manufacture .....      | 2006–2008              |
| Wheel arrangement .....        | <b>B0'B0' de</b>       |
| Drive power in kW .....        | <b>6,000</b>           |
| Top speed in km/h .....        | <b>230</b>             |
| Total weight in t .....        | <b>87</b>              |
| Length over buffers in m ..... | <b>19.6</b>            |

**Series 1293 Vectron (p. 44)**

|                                |                              |
|--------------------------------|------------------------------|
| Number .....                   | 108 ordered, 22 in operation |
| Manufacturer .....             | <b>Siemens Austria</b>       |
| Year of manufacture .....      | 2018–2019                    |
| Wheel arrangement .....        | <b>B0'B0' de</b>             |
| Drive power in kW .....        | <b>6,400</b>                 |
| Top speed in km/h .....        | <b>160</b>                   |
| Total weight in t .....        | <b>90</b>                    |
| Length over buffers in m ..... | <b>18.9</b>                  |

# ÖBB buses\*

**Low-floor bus 12m (p. 6)**

|                           |                             |
|---------------------------|-----------------------------|
| Number .....              | 342                         |
| MFG .....                 | <b>MAN/Mercedes/Solaris</b> |
| Year of manufacture ..... | 2007–2019                   |
| Passenger capacity .....  | <b>85</b>                   |
| Power in kW .....         | <b>250–280</b>              |
| Top speed in km/h .....   | <b>85</b>                   |
| Total weight in t .....   | <b>18.5</b>                 |
| Vehicle length in m ..... | <b>12–12.1</b>              |

**Low Entry 12m**

|                           |              |
|---------------------------|--------------|
| Number .....              | 538          |
| Manufacturer .....        | <b>Iveco</b> |
| Year of manufacture ..... | 2013–2019    |
| Passenger capacity .....  | <b>83</b>    |
| Power in kW .....         | <b>265</b>   |
| Top speed in km/h .....   | <b>100</b>   |
| Total weight in t .....   | <b>17.8</b>  |
| Vehicle length in m ..... | <b>12.1</b>  |

\* In order of year of manufacture

## **Legal Notice**

### **Media Owner & Publisher**

ÖBB-Holding AG  
Corporate Communication  
Mag. Sven Puszwald  
Am Hauptbahnhof 2, 1100 Vienna

### **Project management**

Ingrid Gogl

### **Created & developed by**

Matthias Flödl & Sebastian Treytl

### **Editorial**

Matthias Flödl, communicators and  
press spokespeople of ÖBB

### **Illustrations**

Manuel Böhm, Michael Ambrosch/  
ÖBB-Werbung GmbH

### **Production**

ÖBB-Werbung GmbH  
Production no. 111019-0747

### **Print & Production**

Gerin Druck GmbH

CO<sub>2</sub>-neutrally printed on recycled paper  
produced in Austria entirely from  
waste materials.

7th Issue /1st Edition  
© 2019, ÖBB-Holding AG

All information from 2018 (unless  
otherwise specified), typographical  
and printing errors reserved.



# 3.5 mil.t

SAVED GREENHOUSE GAS  
EMISSIONS THROUGH ÖBB  
RAIL TRANSPORT

CO<sub>2</sub>-EMISSIONS OF THE  
ÖBB RAIL TRANSPORT  
COMPARED TO ...

CAR

## 1:15

TRUCK

## 1:21

PLANE

## 1:31

(Figures 2017)